



# JAPAN 1000

## CRAWLER EXCAVATOR

The Japan 1000 mini excavator features a 15 HP Kubota engine, delivering excellent power and fuel efficiency. Kubota's Japanese engine technology guarantees reliability while meeting emission standards, making the machine both eco-friendly and economical. The Japan 1000 uses a Parkier main pump and 20 MPa hydraulic pressure, providing powerful and precise digging performance. With hydraulics protected against mechanical damage and hoses integrated into the boom, the machine ensures safety and durability even in the most demanding conditions.

Equipped with a swing boom, the mini excavator offers increased flexibility, allowing precise maneuvering in tight spaces. The two-speed travel system adapts to different working conditions, while the Eaton system ensures stability and reliability at various speeds.

### ■ Specification

Weight	975 kg
Moc	15 KM
Travel motor	LKC
Bucket capacity	0.025 cbm
Engine	Japanese Kubota
Main pump	Parkier
Drive	Two travel speeds
Hydraulic hoses	Cylinders protected against mechanical damage
Oil flow	18L/min
Travel speed	Eaton
Travel motors	Concealed
Pressure	20 Mpa
Extendable Tracks	✓
Swing boom	✓
Bucket	380 mm

### ■ Working Range

Max. digging depth	1650 mm
Max. digging radius at ground level	2890 mm
Swing radius	360°
Max. dozer blade digging depth	255 mm
Max. digging height	2610 mm
Max. dozer blade lift height	345 mm

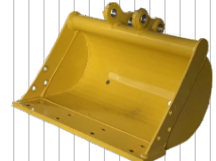
### ■ Main Dimensions

Length	2770 mm
Height	2100 mm
Width	896 mm

### ■ Additional Equipment (for reference)



200 mm Bucket



500 mm Bucket



800 mm Bucket



800 mm Hydraulic bucket



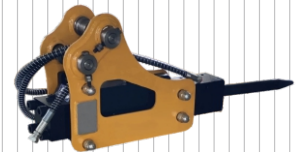
Quick coupler



Wood grapple



Rake



Hydraulic breaker



Earth auger



Ripper tooth

