



GG800NX

CRAWLER EXCAVATOR

The heart of the GG800NX is a modern Gunter Grossmann Diesel engine, compliant with Euro 5 emission standards, ensuring high performance and environmentally friendly operation. With a rated power of 8.6 kW at 3600 rpm, it guarantees reliable performance in all conditions. The advanced Wanye Hydraulic system, with a pressure of 16 MPa, combined with Dali motors, ensures smooth and dynamic operation, while the travel speed of 1.5 km/h allows for easy movement on the construction site.

Due to its compact dimensions (length 2770 mm,width 930mm,height 2100mm), the GG800NX mini excavator is extremely agile and easy to transport, while its solid construction ensures durability and reliability for years. This is the perfect solution for construction, landscaping companies, and individuals looking.

■ Specification

Expandable	Tracks
Movable	Arm
Operating Weight	850 kg
Bucket Width	380mm
Rated Power	8.6 kW / 3600 r/min
Hydraulic Pressure	16 mpa
Travel Motor	Dali
Bucket Capacity for Digging	0.025 cbm
Engine	Diesel Euro 5
Main Pump	Wanye Hydraulic
Swing Motor	Dali
Travel Speed	1,5km/h

■ Working Range

Max. Digging Depth	1650 mm
Max. Dumping Height	1850 mm
Swing Radius	360°
Max. Blade Digging Depth	255 mm
Max. Digging Height	2610 mm
Max. Digging Radius on the Ground	2890 mm
Max. Blade Height Increase	345 mm

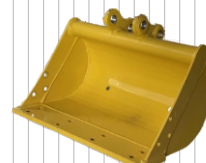
■ Main Dimensions

Length	2770 mm
Height	2100 mm
Chassis Width	896 mm
Width	930 mm
Total Track Length	1230 mm
Track Width	200 mm

■ Additional equipment (for reference)



200 mm Bucket



500 mm Bucket



800 mm Bucket



800 mm Hydraulic bucket



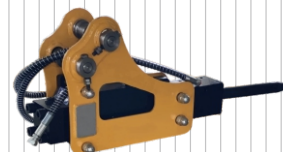
Quick coupler



Wood grapple



Rake



Hydraulic breaker



Earth auger



Ripper tooth

