



# GG800N

## CRAWLER EXCAVATOR

Powered by a Gunter Grossmann Euro 5 Diesel engine with 8.6 kW of power, the GG800N excavator not only delivers the necessary performance but also meets strict emission standards, ensuring environmental friendliness. With a Wanye hydraulic pump and 16 MPa pressure, the machine handles every challenge with ease.

The GG800N offers a maximum digging depth of 1650 mm and a maximum digging height of 2610 mm, enabling precise operations in various conditions. The dumping height of up to 1850 mm makes it ideal for loading materials even in hard-to-reach areas. Thanks to a 360° swing radius, the GG800N provides exceptional maneuverability in tight spaces. A maximum digging radius on the ground of 2890 mm allows for convenient excavation across a wide area.

### ■ Specification

Operating Weight	850 kg
Bucket Width	300 mm
Rated Power	8.6 kw/3600r/min
Hydraulic Pressure	16 Mpa
Travel Motor	Dali
Bucket Capacity	0.025 cbm
Engine	Diesel Gunter Grossmann Euro 5
Main pump	Wanye Hydraulic
Swing Motor	Dali
Travel Speed	1,5km/h

### ■ Working Range

Max. Digging Depth	1650 mm
Max. Dumping Height	1850 mm
Swing Radius	360°
Max. Dozer Blade Digging Depth	255 mm
Max. Digging Height	2610 mm
Max. Digging Radius on Ground	2890 mm
Max. Dozer Blade Lift Height	345 mm

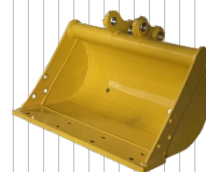
### ■ Main Dimensions

Length	2770 mm
Height	2100 mm
Undercarriage Width	896 mm
Width	930 mm
Total Track Length	1230 mm
Track Width	200 mm

### ■ Additional Equipment (for reference)



200 mm Bucket



500 mm Bucket



800 mm Bucket



800 mm Hydraulic bucket



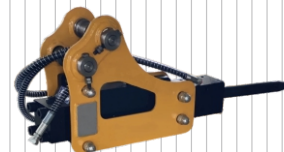
Quick coupler



Wood grapple



Rake



Hydraulic breaker



Earth auger



Ripper tooth



