



GG800

CRAWLER EXCAVATOR

If you're looking for a machine that combines high performance, reliability, and compact dimensions, our 994 kg operating weight excavator is the perfect choice for you. With its advanced design and innovative solutions, it will become an indispensable tool in your work.

With a power output of 8.6 kW, it not only ensures fuel efficiency but also excellent work performance. Its Euro 5 Diesel Koop system guarantees compliance with the latest emission standards. Combined with the 16 MPa Wanye hydraulic pump, you can be confident that the excavator will handle even the toughest tasks in no time. The maximum digging depth is 1650 mm, and the maximum digging height reaches 2610 mm, making it an excellent solution for work in narrow spaces and areas with limited access.

■ Specification

Working weight	994 kg
Spoon width	380mm
Rated power	8.6 kw/3600r/min
Hydrullic pressure	16 mpa
Travel engine	Dali
Bucket capacity for digging	0.025 cbm
Engine	Diesel Koop Euro 5
Main pump	Wanye Hydraulic
Rotary engine	Dali
Travel speed	1,5km/h

■ Scope of work

Max. Digging depth	1650 mm
Max. Amount of dumping	1850 mm
Max. Digging radius on the ground	360°
Max. Increase the height of the bulldozer blade	255 mm
Max. Digging height	2610 mm
Max. Digging radius at ground level	2890 mm
Max. Raise the bulldozer blade height	345 mm

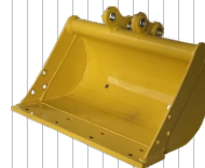
■ Main dimensions

Length	2770 mm
Height	2100 mm
Chassis width	896 mm
Chassis clearance	132 mm
Width	930 mm
Total track length	1230 mm
Track width	200 mm
Track height	320 mm

■ Additional equipment



200 mm Bucket



500 mm Bucket



800 mm Bucket



800 mm Hydraulic bucket



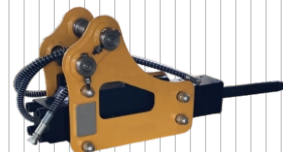
Quick coupler



Wood grapple



Rake



Hydraulic breaker



Earth auger



Ripper tooth

