



GG1100JC

CRAWLER EXCAVATOR CABIN

The GG1100JC mini excavator is powered by a Kubota engine delivering 15 HP, which guarantees not only excellent power but also fuel efficiency. The Japanese engine quality ensures reliability and longevity, making the GG1100JC the perfect choice for various construction tasks, both in urban environments and challenging terrains.

The GG1100JC offers an impressive working range, making it an extremely versatile machine. With a digging depth of 1650 mm and a digging height of 2610 mm, the mini excavator can handle a variety of construction tasks, from excavation and land leveling to work in hard-to-reach places. The 360° rotation radius provides full freedom of maneuver, enabling precise work without the need to reposition the machine.

■ Specification

Weight	1000 kg
Bucket width	340 mm
Power	15 HP
Travel Motor	Dali
Bucket Capacity	0.025cbm/120kg
Engine	Japanese Kubota
Main Pump	Wanye Hydraulic
Swing Motor	Dali
Travel Speed	1,5km/h
Extendable Tracks	✓
Swing Arm	✓
Joystick	✓

■ Work Range

Max. Digging Depth	1650 mm
Swing Radius	360°
Max. Blade Digging Depth	255 mm
Max. Digging Height	2610 mm
Max. Digging Radius on the Ground	2890 mm
Max. Blade Height	345 mm

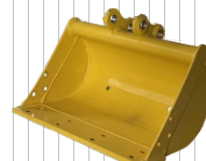
■ Main Dimensions

Length	2770 mm
Height	2100 mm
Width	896 mm
Wheelbase	770 mm
Total Track Length	960 mm

■ Additional equipment



200 mm Bucket



500 mm Bucket



800 mm Bucket



800 mm Hydraulic bucket



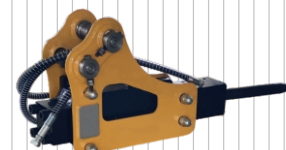
Quick coupler



Wood grapple



Rake



Hydraulic breaker



Earth auger



Ripper tooth

