



# GG1100C

## CRAWLER EXCAVATOR CABIN

The GG1100C mini excavator is powered by a reliable 15 HP Kubota engine, delivering high power with low fuel consumption. Japanese technology guarantees not only efficiency but also long service life and trouble-free operation. The cab version additionally protects the operator from harsh weather conditions, dust, and noise, significantly enhancing comfort during intensive construction work.

Thanks to the Wayne hydraulic pump and an operating pressure of 16 MPa, the GG1100C offers excellent digging force and precision. The hydraulic system allows smooth operation even during demanding tasks such as foundation excavations, leveling, or material loading. The GG1100C provides an impressive working range: a digging depth of up to 1650 mm, a digging height of up to 2610 mm, and a ground-level digging radius of 2890 mm. The 360° swing radius enables precise work without the need to reposition the machine.

### ■ Specification

Weight	1100 kg
Bucket	340mm
Power	15 KM
Travel motor	Dali
Bucket capacity	0.025cbm/120kg
Engine	Japanese Kubota
Main pump	Wanye Hydraulic
Swing motor	Dali
Travel speed	1,5km/h
Expandable tracks	✓
Swing boom	✓

### ■ Working Range

Max. digging depth	1650 mm
Swing radius	360°
Max. dozer blade digging depth	255 mm
Max. digging height	2610 mm
Max. digging radius on ground	2890 mm
Max. dozer blade lift height	345 mm

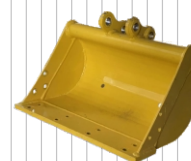
### ■ Main Dimensions

Length	2770 mm
Height	2100 mm
Width	896 mm
Wheelbase	770 mm
Overall track length	960 mm

### ■ Additional equipment (for reference)



200 mm Bucket



500 mm Bucket



800 mm Bucket



800 mm Hydraulic bucket



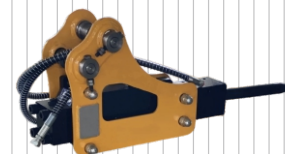
Ripper tooth



Wood grapple



Rake



Hydraulic breaker



Earth auger



